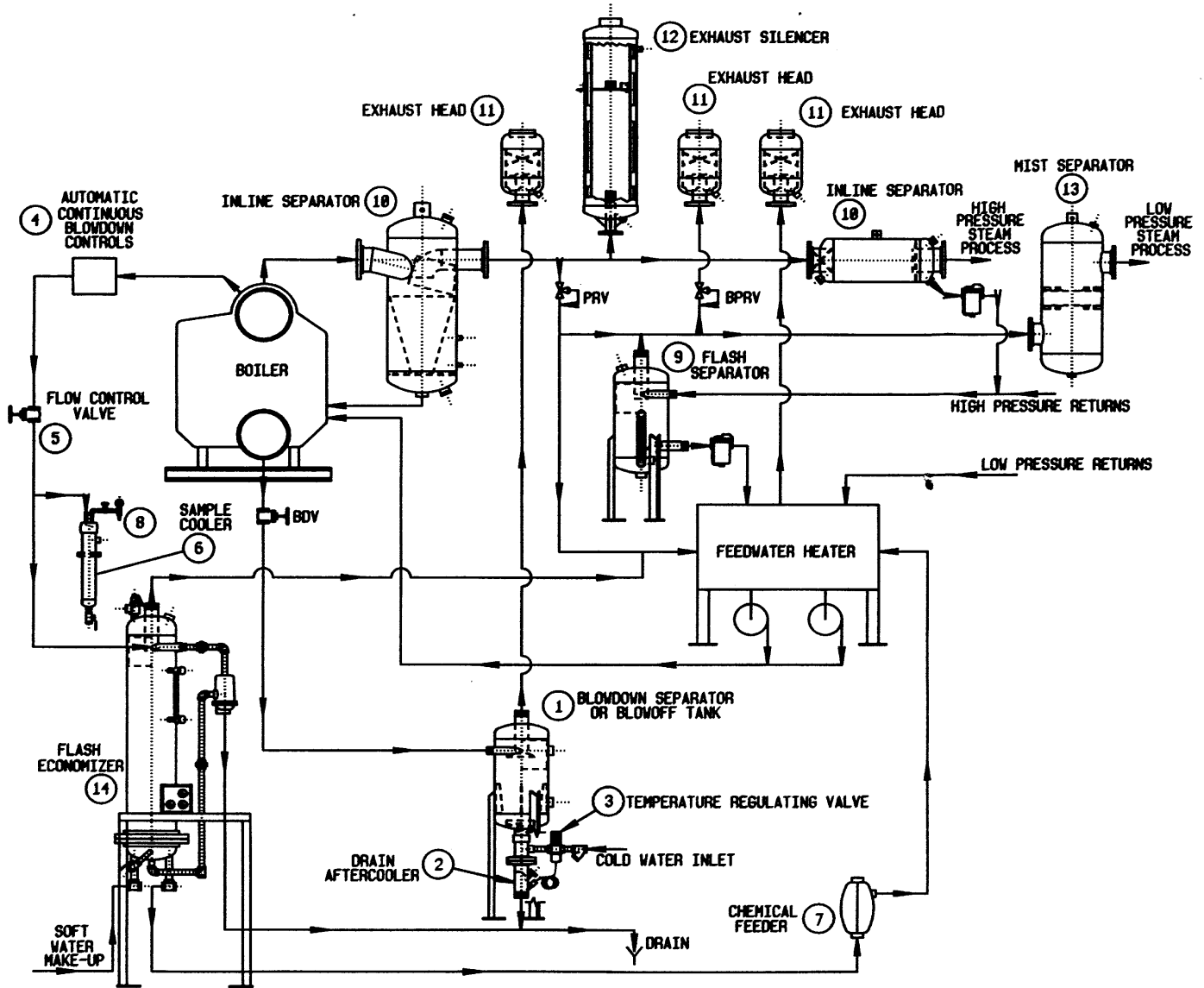


The schematic below shows Penn products in a numerical diagram as used in a typical steam system. The numbers represent a product line that is described under that section of this catalog. Penn also offers a system approach such as ①, ②, & ③ which can be used as a complete boiler blowdown package or could be used individually at various locations in the plant. Some products have other uses besides in a boiler room such as Entrainment Separators or Exhaust Silencers for compressed air systems, natural gas lines, and chemical processing.



- | | | |
|--|-------------------------|---|
| ① Blowdown Separator /
Blowoff Tank | ⑥ Sample Cooler | ⑪ Exhaust Head |
| ② Condensate Aftercooler | ⑦ Chemical Feeder | ⑫ Exhaust Silencer |
| ③ Temp. Regulator Valve | ⑧ Test Equipment | ⑬ Mist Separator |
| ④ Automatic Continuous
Blowdown Control | ⑨ Flash Separator/Tank | ⑭ Flash Economizer/Cont.
Blowdown Heat
Recovery |
| ⑤ Flow Control Valve | ⑩ Entrainment Separator | |